



Bowdun

Offshore Wind Farm

Opportunities with Thistle Wind Partners OEUK Share Fair 2026

www.twp.scot/bowdun

[f bowdunwindfarm](https://www.facebook.com/bowdunwindfarm)

TWP THISTLE
WIND
PARTNERS

 **OEUK**
Share Fair 2026

WE'RE PRESENTING
AND OFFERING
1-2-1 MEETINGS

19 March 2026 | P&J Live, Aberdeen
#OEUKShareFair





Agenda

- 1. Bowdun Offshore Wind Farm: Introduction and Project Update**
- 2. Delivery Structure**
- 3. Supply Chain Pathways Programme**
- 4. How to Engage with Us**



About Bowdun Offshore Wind Farm

- Up to 67 Turbines (fixed foundation design)
- 38km from turbines to closest point on land
- 60m+ Water Depths
- Power for 1.2million homes
- 1GW Capacity
- Grid Connection in Aberdeenshire (Hurlie Substation)
- Landfall Aberdeenshire coast near Benholm

Bowdun

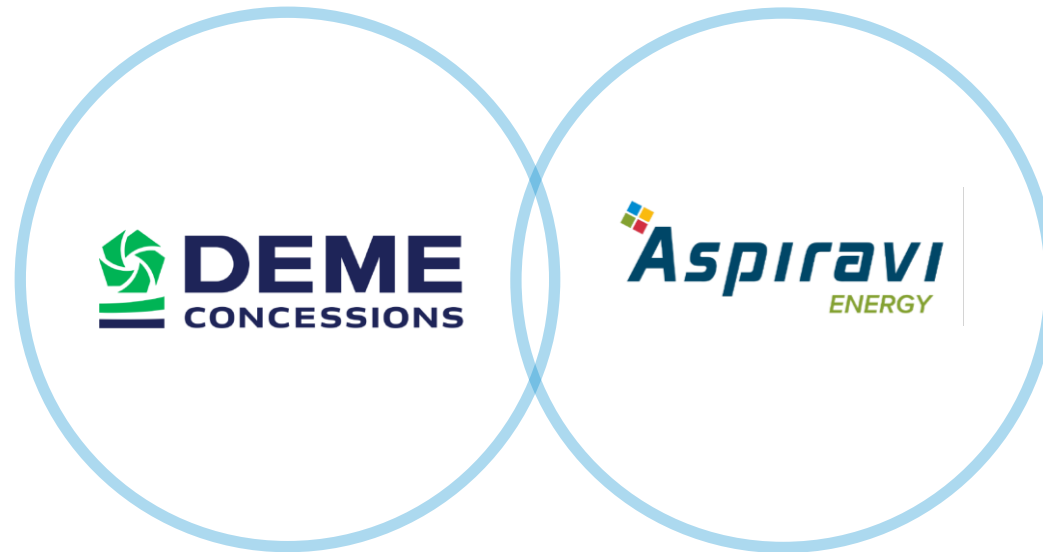
Offshore Wind Farm





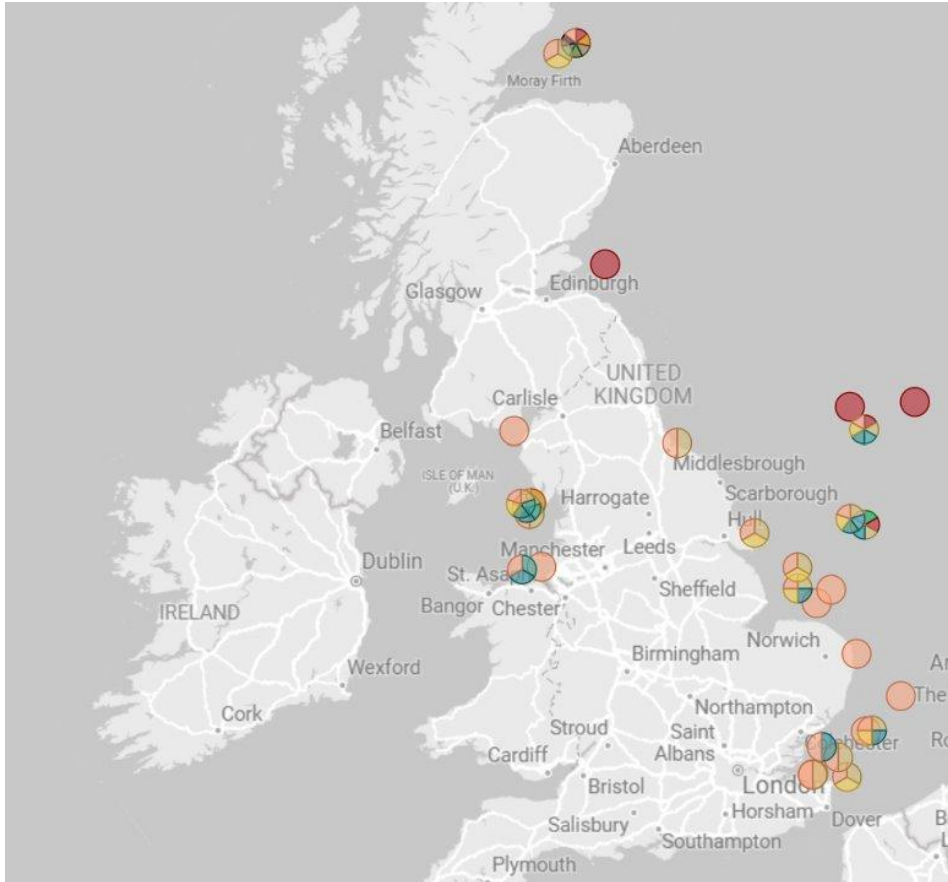
Thistle Wind Partners

Our shareholders– DEME Group and Aspiravi – bring experience from a global renewables portfolio that is distinguished by offshore engineering excellence and a track record of delivering local economic benefit.





DEME Offshore: in numbers



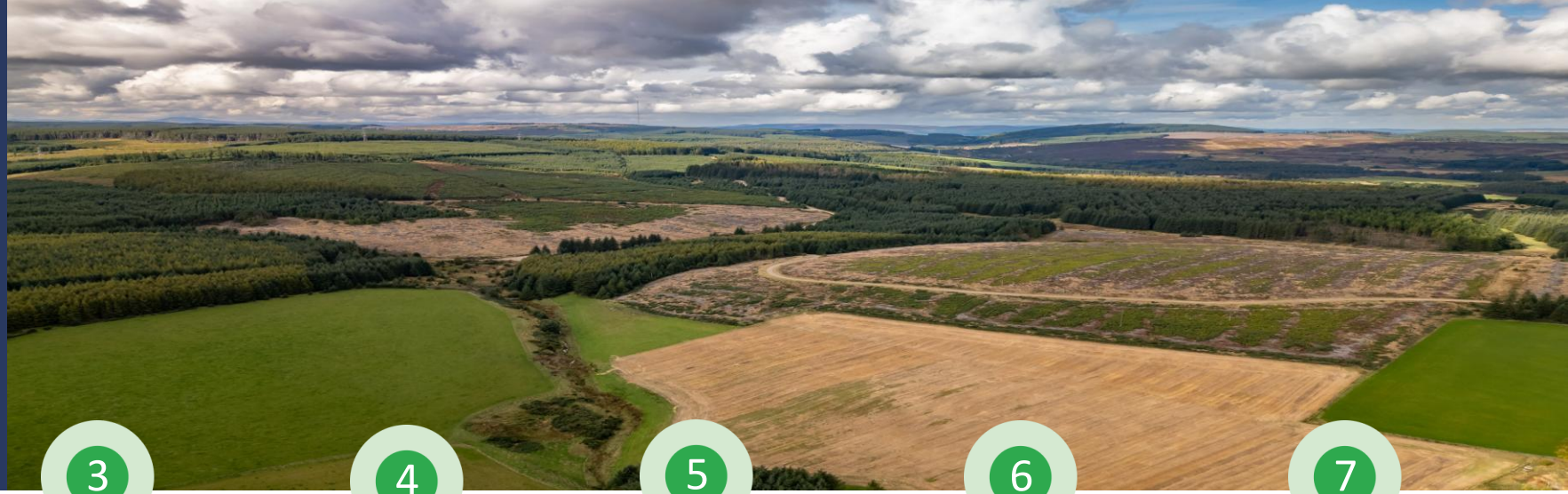
- Export Cable
- Inter Array Cables
- Jacket
- Jacket Piles
- Monopile
- Scour Protection CPS Stabilization
- Scour Protection OSS Pre-Lay
- Scour Protection WTG Post-Lay
- Scour Protection WTG Pre-Lay
- Substation
- Transition Piece
- WTG



Burbo Bank Ext - Dogger Bank A - Dogger Bank B - Dogger Bank C – Dudgeon - East Anglia1 – Galloper - Greater Gabbard - Gunfleet Sands - Gwynt Y Mor - Hornsea 1 - Hornsea 1 (IAC Replacement/Repair) - Hornsea 2 - Kentish Flats - Kentish Flats Extension - London Array - Moray East - Moray Firth West - Nearth na Gaoithe – Ormonde - Race Bank - Robin Rigg - Scroby Sands - Sheringham Shoal – Teesside – Thanet - Triton Knoll – Walney - West of Duddon Sands - Westernmost Rough



Bowdun recent activities



1

Consent Applications-
Onshore Oct '25
Offshore April '26
Scoping Opinions
Received

2

24 month
offshore aerial
bird and
marine
mammal,
benthic surveys
complete

3

Metocean
campaign
complete

4

Geophysical
campaign
completed

5

Pre-FEED
scopes
completed

6

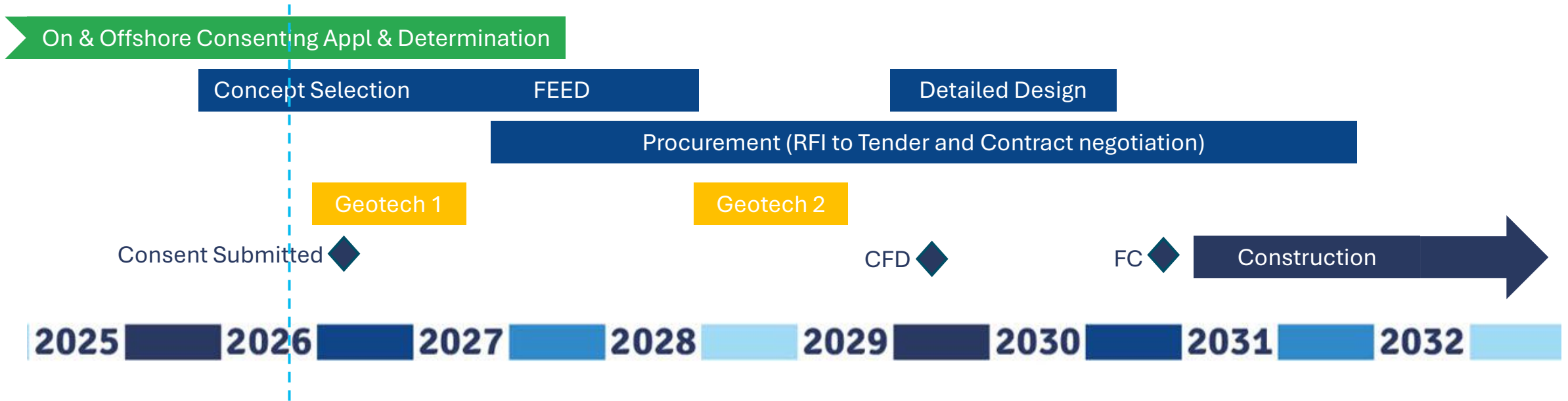
Grid-
Connection
offer agreed
Cable Route
finalised

7

Geotechnical
campaign
April '26

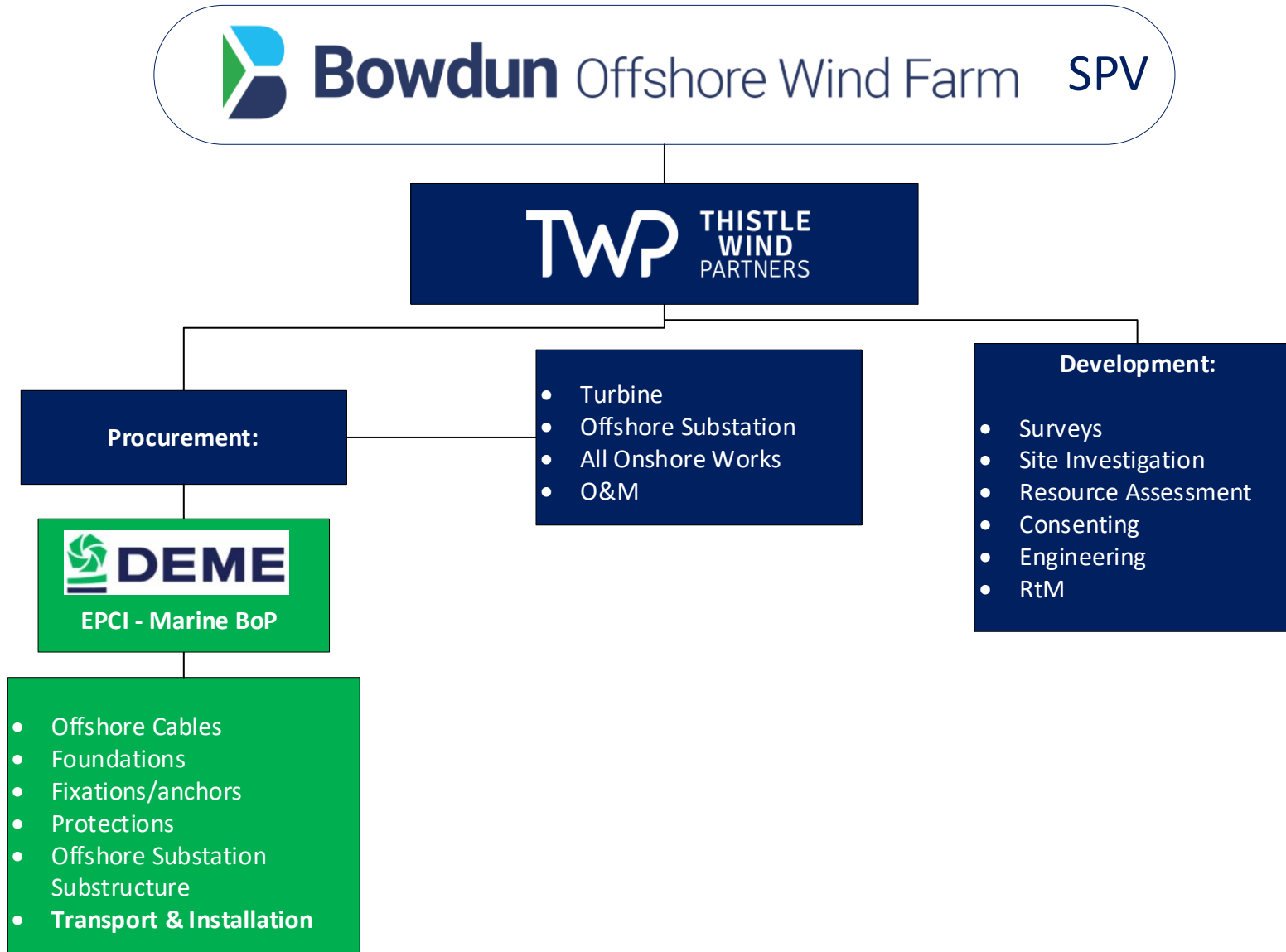


Bowdun timeline





Delivery Structure





Supply Chain Pathways Programme

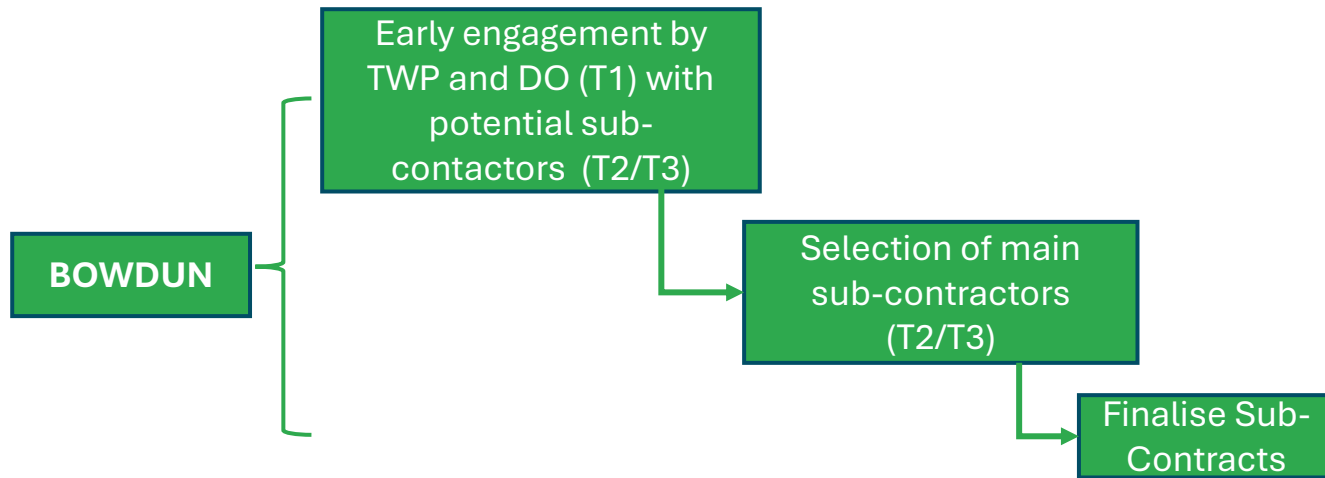


Bowdun Offshore Wind Farm

Supply Chain Pathways Programme.



More effective (earlier) Local Supply Chain (T2/T3) Engagement



Benefits:

- Reduces risk of program delays, particularly between CfD and FC
- Greater pricing certainty for CfD.
- Allows time for local supply chain to prepare for OWF market.
- Bridges contracting “valley of death” for Scottish suppliers





Supply Chain Pathways Programme



OBJECTIVES

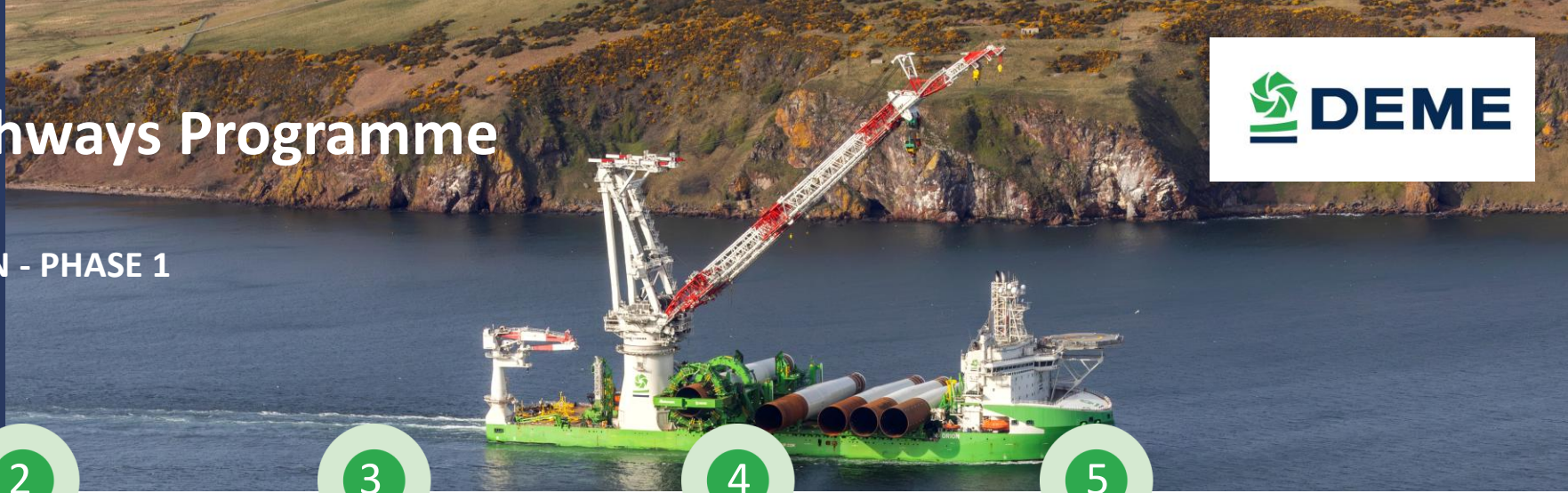
- **Maximize Scottish Content:** Use early EPCI engagement to give Scottish suppliers access to Tier 1.
- **Expand Supplier Base:** Pre-qualify Scottish/UK firms for TWP's Scotwind projects.
- **Enable Investment:** Channel EPCI insights via Scottish Government agencies to unlock supplier funding.
- **Focus on Local Sourcing:** Target products/services Scotland can realistically supply today.
- **Align with Demand:** Prioritize and match Scottish capabilities with TWP/DEME needs.
- **Accelerate Engagement:** Begin supply chain work early to guide Scottish investment needs and reduce risk.



Supply Chain Pathways Programme



PROCESS DESCRIPTION - PHASE 1





Supply Chain Pathways Programme



STEP 1 - TAXONOMY CREATION



Foundation

- Monopile
- Transition Piece
- Jacket
- Pin Pile
- Suction Bucket



T&I

- Logistics
- Equipment



Services

- Engineering
- Inspection
- Rentals ...



Supply Chain Pathways Programme



STEP 2 – SUPPLIER MAPPING



DEME, TWP, Enterprise Agencies,
Clusters

Database, RFI, ...

~250 Scottish suppliers identified

Suppliers mapped to taxonomy
items



Supply Chain Pathways Programme



STEP 3 – EVALUATION & SHORTLISTING





Supply Chain Pathways Programme



STEP 4 – PROFILING



Supplier Profile

Business
overview

Experience &
Track record

Location &
Infrastructure

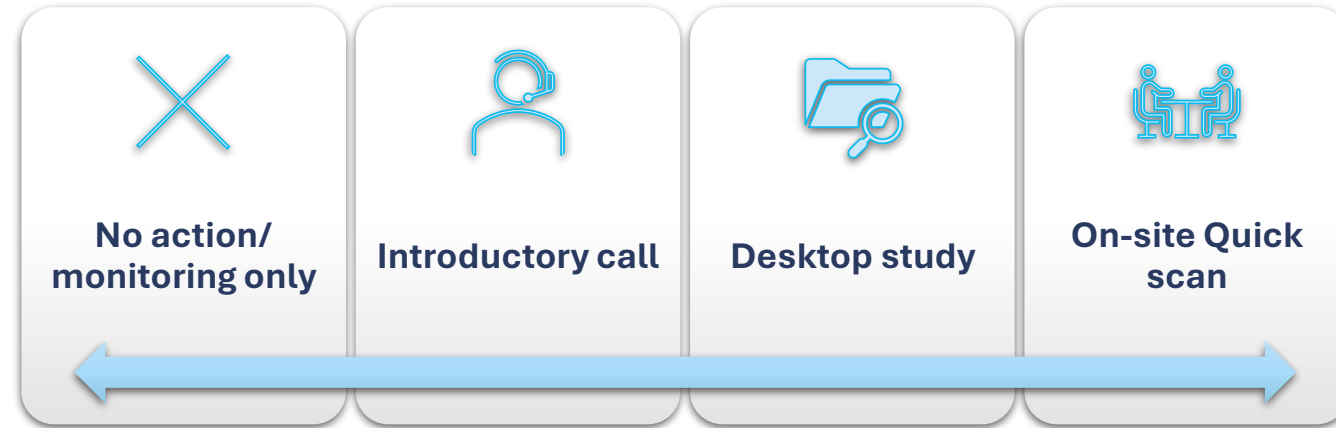
Alignment with
DEME/TWP/EA



Supply Chain Pathways Programme



STEP 2 – ACTION PLAN & DELIVERY



Results

Offshore Wind Market access

Guidance and technical recommendation to boost supplier capabilities and positioning in offshore wind.

Pre-qualification for procurement

Scottish suppliers assessed and pre-qualified for TWP and DEME tenders and future UK projects

Export and global sourcing potential

Eligible suppliers can access export and worldwide offshore wind opportunities.



How to Engage With Us

Supplier Registration

<https://thistlewindpartners.scot/suppliers/>



Supplier Registration



Capability Statement (please attach)

No file chosen

Primary location of services, components and personnel

- Scotland
- Rest of UK
- European Union
- Rest of World

Which project are you primarily interested in registering for the supply chain?

- Bowdun (Aberdeenshire)
- Ayre (Caithness)
- Both

Project phases you could support:

- Development
- Manufacturing and Fabrication
- Installation
- Operations

Your services:

- Accommodation
- Cable Ancillaries
- Civils and Construction Management
- Environmental Surveys (Onshore or Offshore)
- Geotechnical / Geophysical Surveys (Onshore or Offshore)
- Inspection
- Main Components
- Materials Supply
- Mooring / Anchoring Systems
- Offshore Transport
- Plant, Equipment or Vehicle Hire
- Professional Advice
- Security
- Training, Education and STEM
- Other

If Other, please specify



How to Engage With Us

Supplier Registration

<https://thistlewindpartners.scot/suppliers/>

Energy Pathfinder – Bowdun Offshore Wind Farm

<https://energypathfinder.nstauthority.co.uk/projects/3761?back-url=%2Fprojects>



Bowdun

Offshore Wind Farm

Capital Building
12-13 Andrew Square
EH2 2AF, Edinburgh
Scotland, United Kingdom

contact@twp.scot

Gavin MacKay
Supply Chain Manager
supplychain@twp.scot

Saul Shapiro
Procurement Manager
procurement@twp.scot

www.twp.scot/bowdun

[f bowdunwindfarm](https://www.facebook.com/bowdunwindfarm)

TWP THISTLE
WIND
PARTNERS