

Corporate Presentation




النفط والغاز
PETROGAS

About Us

We are an Oman-based privately-owned multinational E&P company and are part of the MB Holding Group. We have production operations in Oman, Egypt and The Netherlands, with additional acreage in UK and Denmark

We produce from onshore heavy to light oil fields, including EOR, and produce gas from offshore installations

GROSS PRODUCTION

90,000

boepd



900 Manpower

Where are we



We are part of MB Group

Mohammed Al Barwani LLC (MB Group) was Founded in 1982 by Dr. Mohammed Al Barwani.

It's a multinational group of companies with interests in over 20 countries across the globe.

MB Group operates in the Middle East, Europe, Africa, South Asia and Australia.

www.mbholdingco.com

Mining



Oil & Gas
Exploration
and
Production



Oil & Gas
Services



Engineering
Marine
Fabrication



oceanco

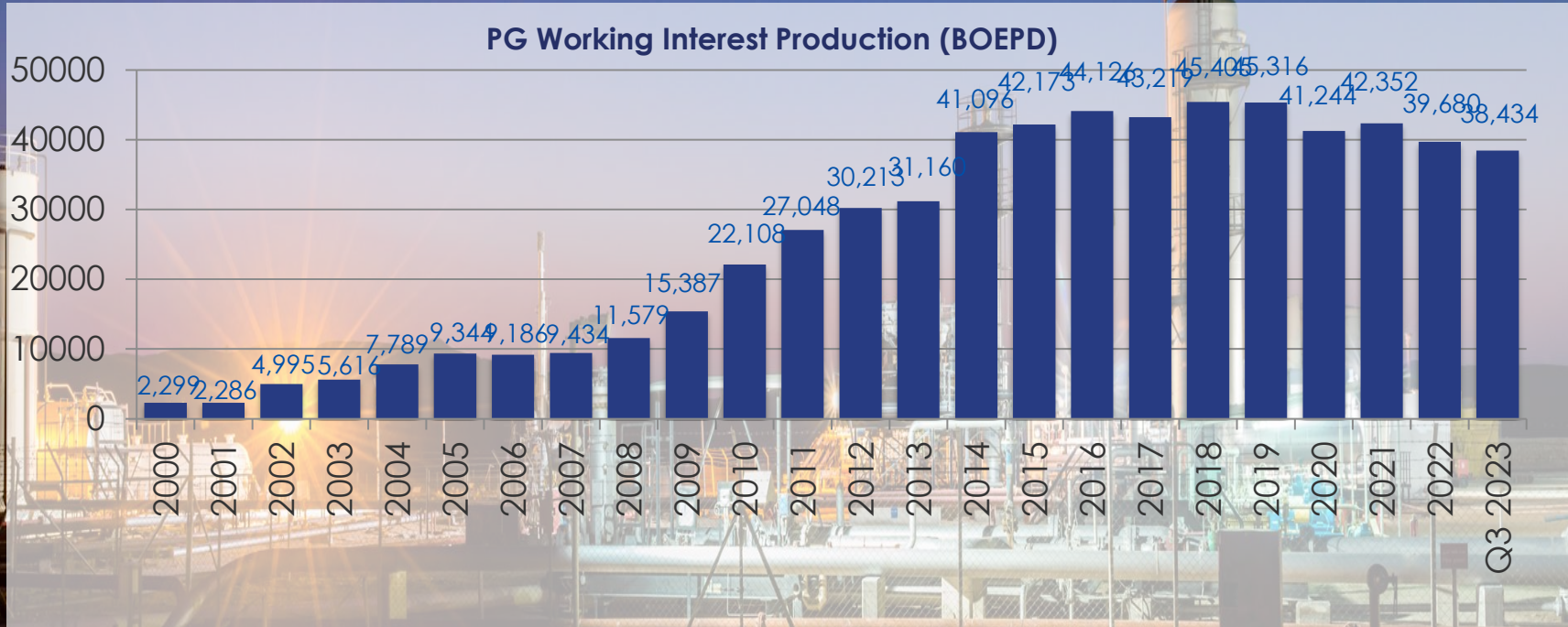
Luxurious
Yachts



Hotel
Development

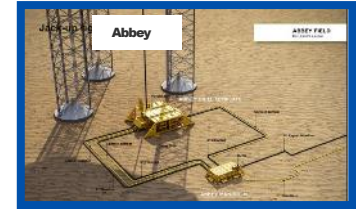
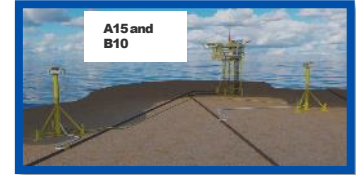
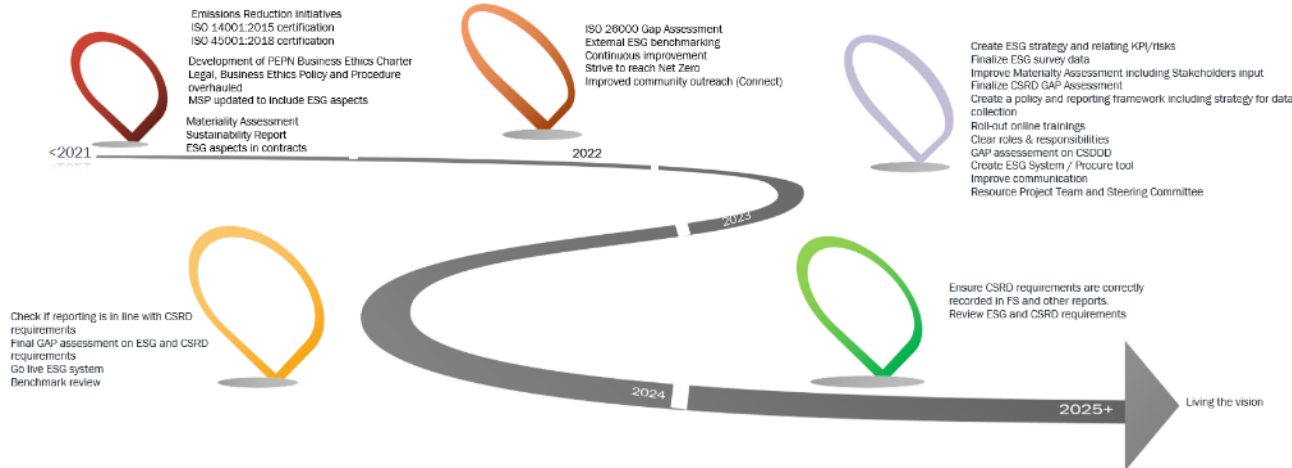


Production Performance



Short Term Strategy – Sustainable Business Growth

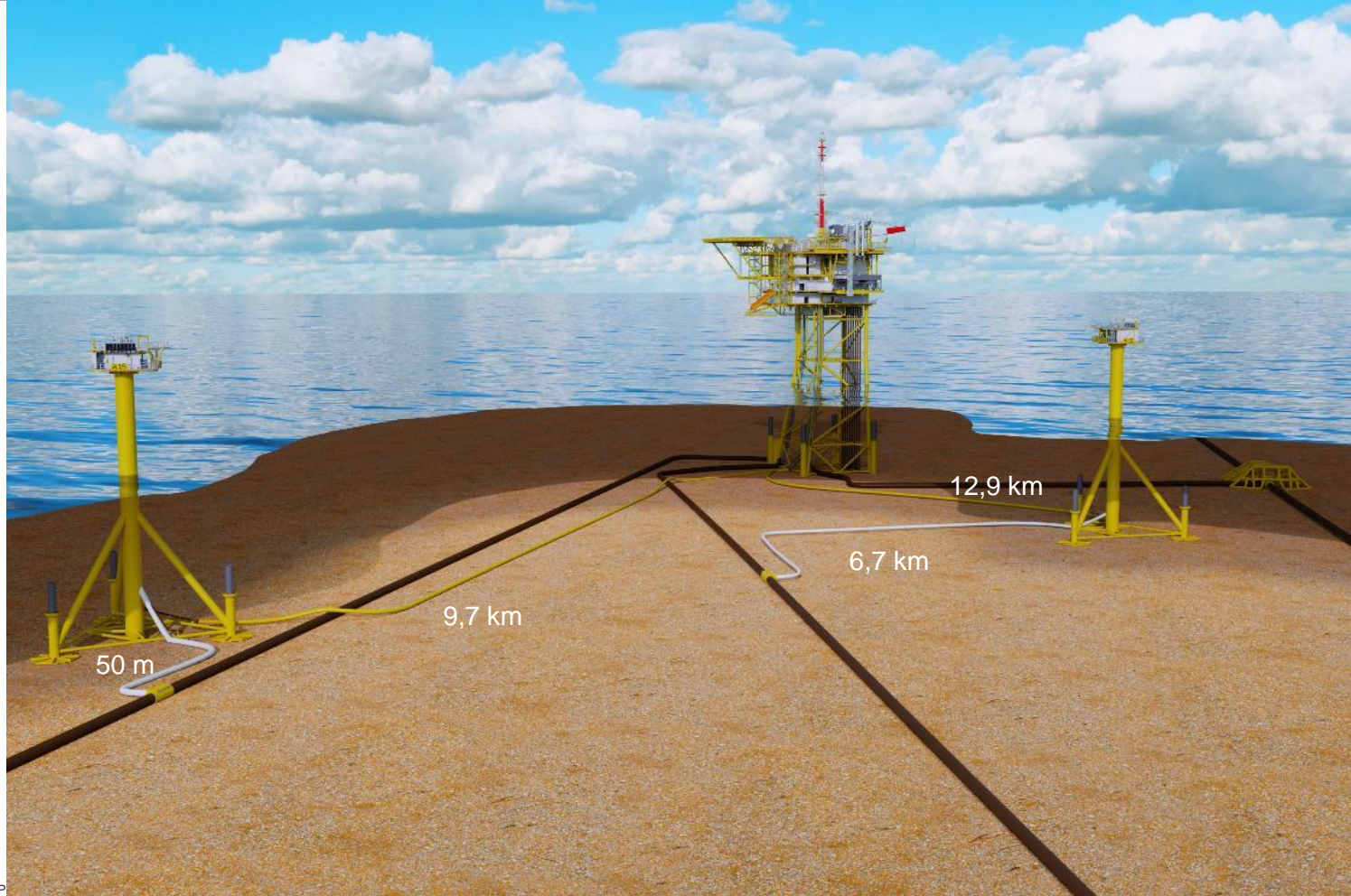
- Continue to sustain and optimize existing production.
- Organic Growth through Development New Projects within the existing business portfolio
 - Lekhwait Small Fields (LSF) development in The Sultanate of Oman (Onshore)
 - A&B Gas fields – A15 and B10 development in The Netherlands (Offshore)
 - Birgitta Gas field development, United Kingdom (Offshore)
 - Abbey Gas field development, United Kingdom (Offshore)
- Active in the ESG projects for business sustainability



Dutch Sector Progress

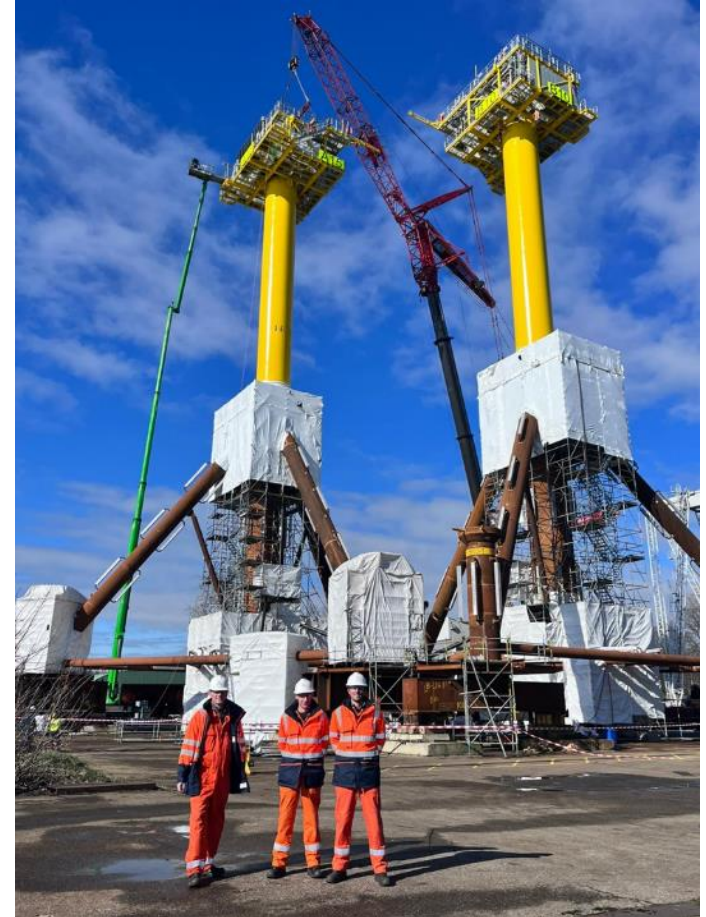


A15 and B10 Project Overview



Key achievements

- FID 31st March 2022
- HSM Offshore Complete total platform fabrication on schedule the 1st of April'23, ready for load-out
- Heerema Marine Contractor (HMC) - Complete installation of A15 and B10 platform with the set tolerance on 3rd of June
- JDR - Completed manufacturing of the umbilicals, delivery on schedule (July 2023)
- Completed brownfield modifications A12 and installation of J-tube (Bluestream)
- Allseas – Complete pipeline and umbilical installation August'23
- DCN subsea construction activities completed Feb 2023
- Rig Noble resolute arrival 5th November'23, 3 wells hooked-up and commissioned
- First Production 14th Feb'24



Proud site team

Platform installation



Thialf during transportation



Thialf during Mobilization



Thialf during B10 platform installation

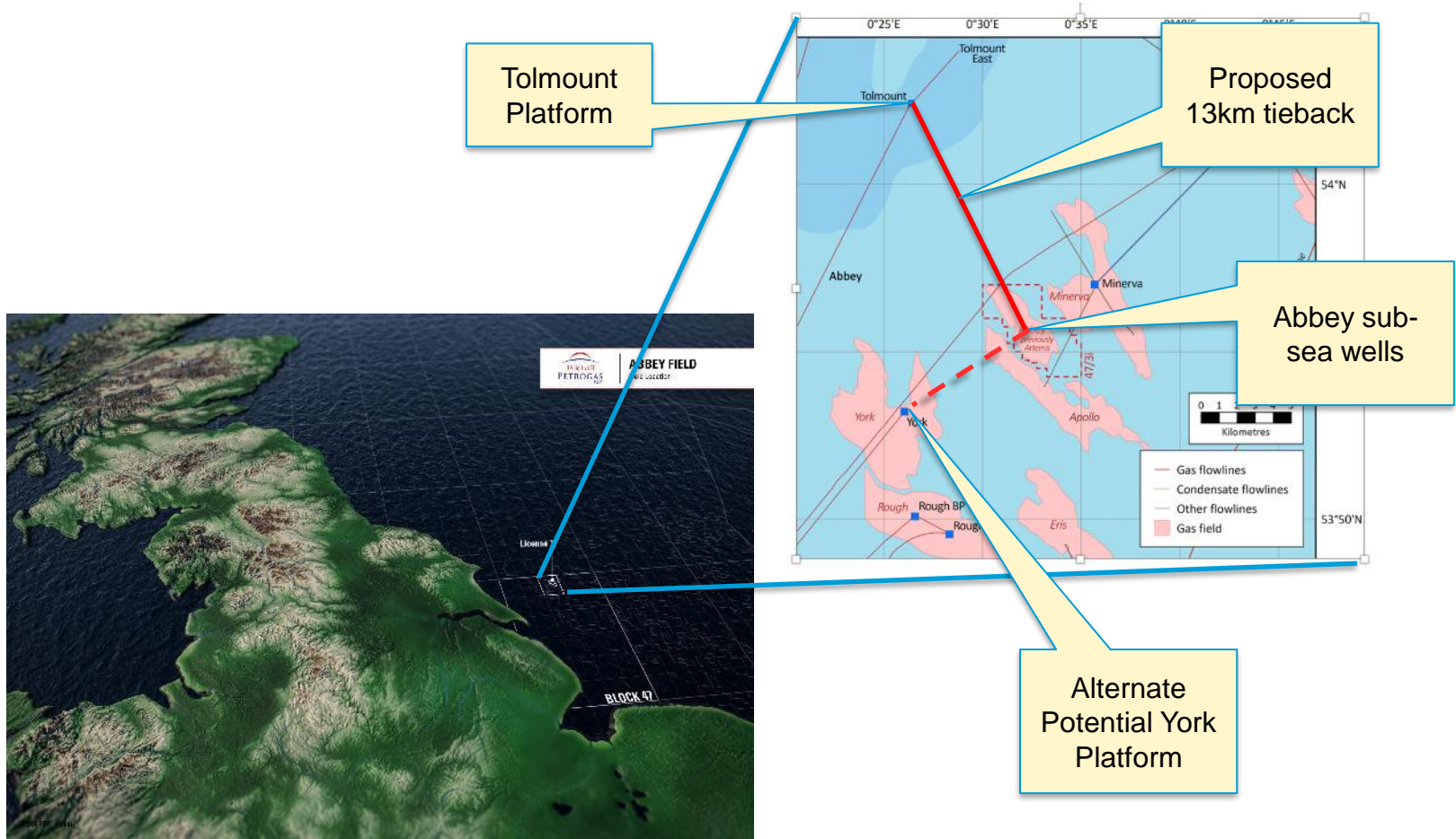


A 15 platform installed

Abbey Development



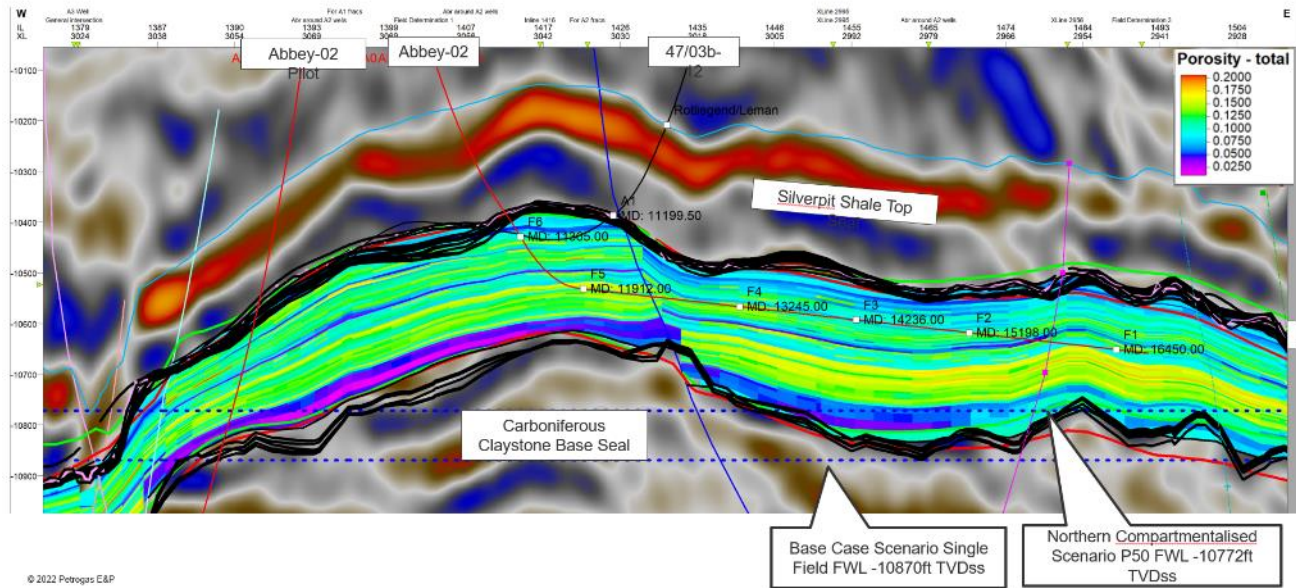
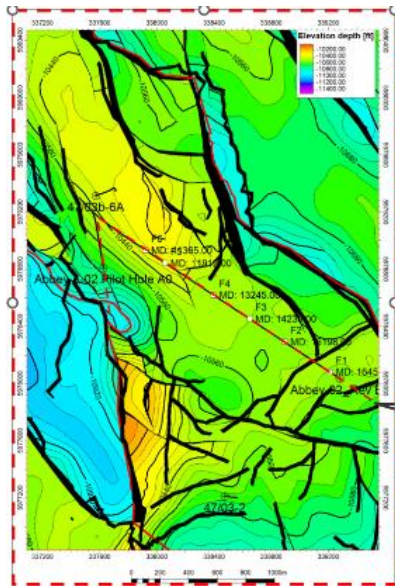
Abbey Development



Seismic / Reservoir profile along Abbey-A02 well path (and pilot hole)

- Pilot and Commitment Well path

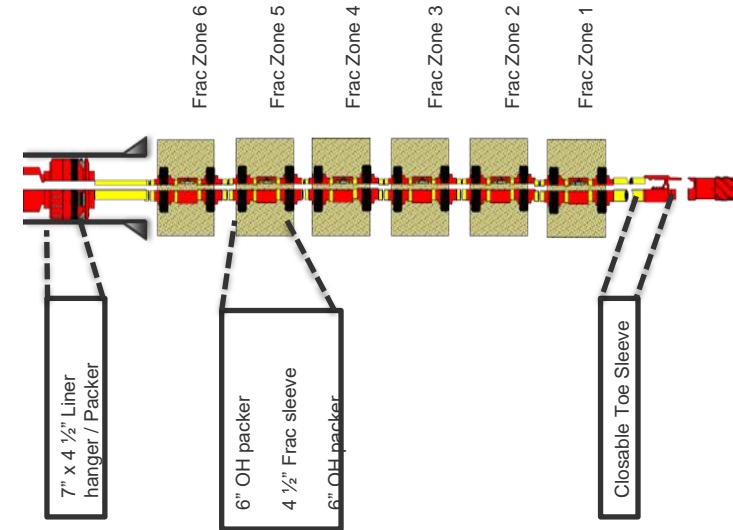
Abbey-02 (ALL FRACS) and Abbey-02 Pilot hole



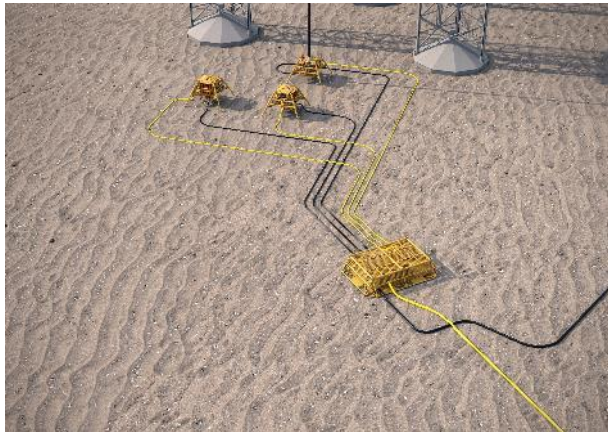
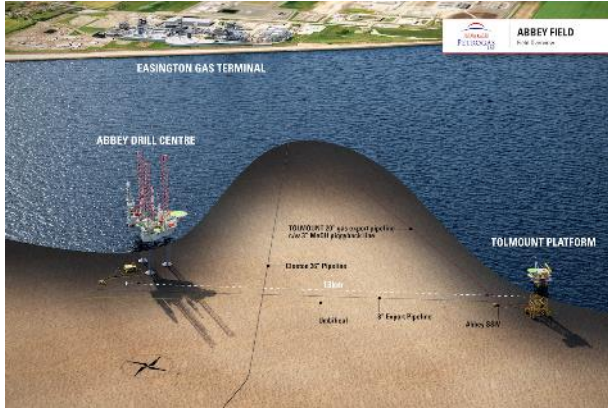
Abbey Commitment Well

Multistage Frac Completion

- Uncemented multistage lower completion system to deliver stimulation treatment still recommended from cost saving perspective (6-7 MM GBP vs P&P method)
- Ability to deploy as a liner along the horizontal
- Closable circulation toe sleeve to allow wash down, circulation & facilitate setting of the open hole packers
- Annular isolation between zones achieved with hydraulic open hole packers
- Mechanical activation of stimulation sleeves with dedicated stimulation BHA deployed on 2.7/8" work string
- Frac sleeve design with internal screen to have maximum proppant retention facility is not available for current hole size, design engineering ongoing with NCS
- Reclosable Frac sleeve will be used in conjunction with Resin Coated Proppant (RCP) stimulation treatment
- Lower & upper completion equipment is on order with WFD, delivery time is 32 to 45 weeks

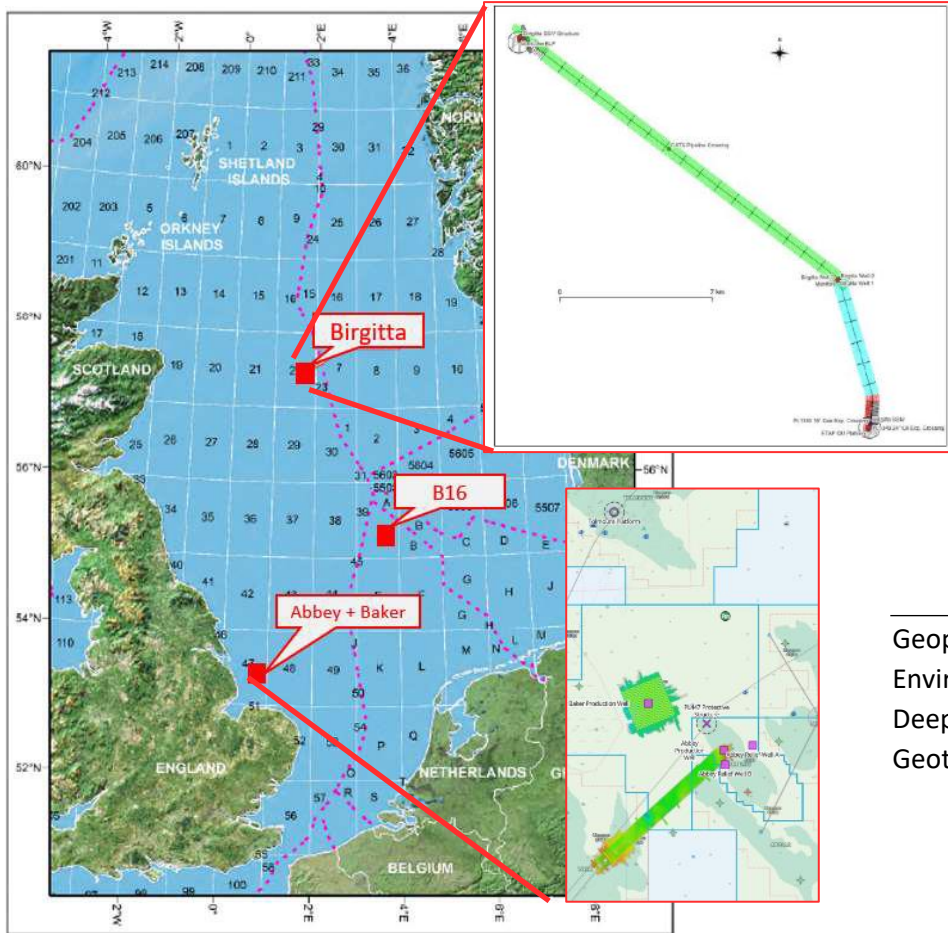


P2582 (Abbey) - Development Facilities



- 3 horizontal wells hydraulically stimulated.
- Well completion design has been chosen to minimise time need to stimulate the wells and reduce well clean up times.
- Each well to be tied back to a manifold located approx. 50m from the wells.
- The manifold is connected to the host facility via 8-inch rigid pipeline which includes a SSIV near the host platform.
- The manifold and SSIV structure will be gravity based, so no piling.
- A new umbilical will provide control and chemical services from the Tolmount or York platform to the Abbey facilities.
- The pipeline and umbilical will be laid on the sea bed and trenched or rock dumped for protection and stability
- Abbey production flows :
 - either to Easington via Tolmount
 - Or to Dimlington via York
- First Gas planned 2027

Wellsite and Pipeline Survey work 2024



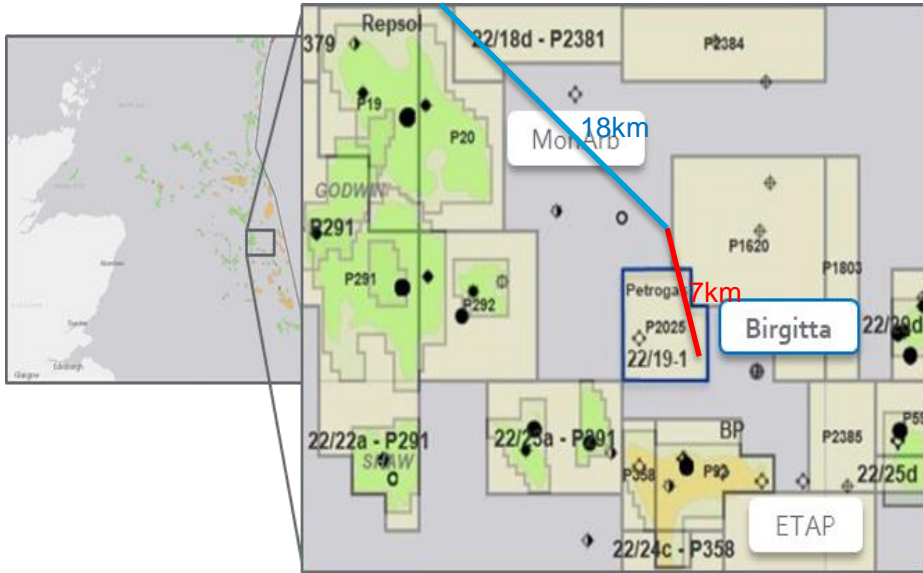
	Wellsites			Pipeline	
	Abbey	Baker	B16	York	Birgitta
Geophysical					
Environmental					
Deep Geotech					
Geotechnical					

Feb-Apr
May
June

Birgitta Development



Birgitta Project – Concept Select stage



- 2 subsea hydraulically fracked wells
- Gas Condensate
- Near HTHP conditions
- Subsea manifold
- Pipe in Pipe flowline to Host
- Umbilical to Host
- 2 Host Options:
 - 18km to MonArb sharing modifications with Infill Project
 - 7km to ETAP
- FID in 2025, First Gas end 2027

